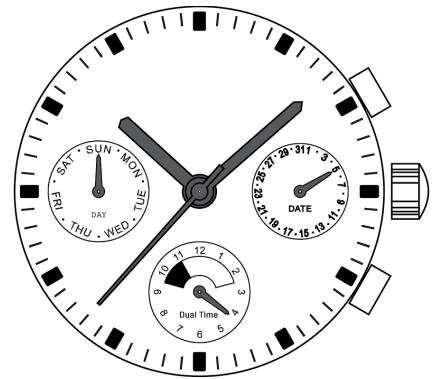


Cal 9239 / 0005



13 1/4'''
30.6 mm
H. 4.20



Multifunction

9h



Day by hand

6h



Dual Time

6h

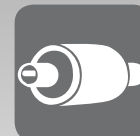


Day and night indication

3h



Date by hand


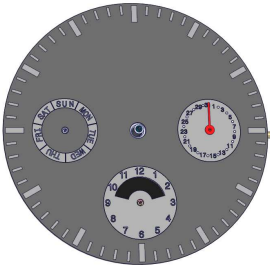
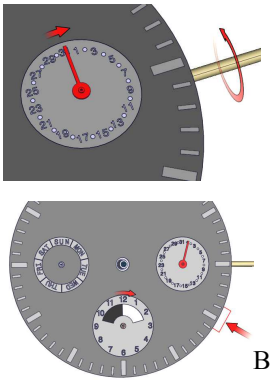
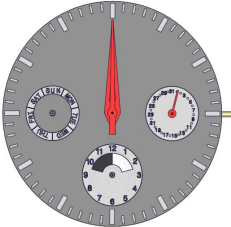


Strong motor

In conformity with RoHS standard

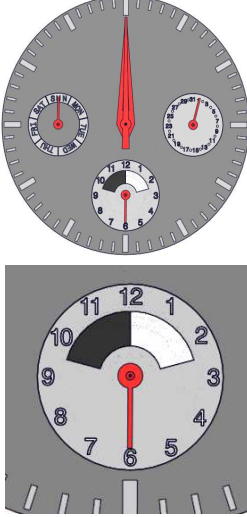



ISASPECIALITY

OBJECT	ILLUSTRATION	PROCEDURE	INFORMATION
Preparation			
Visual checking		<ol style="list-style-type: none"> 1) Check the dial. 2) Check the hands. 3) Check the case, case back and glass. 4) Check the hand setting stem. 	No scratches, no dust, no finger spots, no discoloration great flatness / straightness.
Dial fitting		<ol style="list-style-type: none"> 1) Pull the crown to position 2 to stop the movement. 2) Remove all the plastic hands. 3) Fit and hold the dial. 	Use the movement holder TRT01-84 to maintain the movement during hands fitting. TRT01-84 
Date hand fitting		<ol style="list-style-type: none"> 1) Set the date hand onto the counter at 3h. 2) Check height and flatness of the hand. 	
Indexing date and second time zone		<ol style="list-style-type: none"> 1) Turn the crown clockwise until the date jump. 2) Press the push button B at 4H for indexing the day/night disk on a median position (limit day/night at 12H). 	
Hour, minute and second hands fitting		<ol style="list-style-type: none"> 1) Set the hour, minute and second hands on the center. 2) Check height and flatness of hands. 	

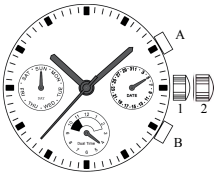
In conformity with RoHS standard

Doc. n° 0312204 - CG - A Up date: 18/10/2011 - Page 2

OBJECT	ILLUSTRATION	PROCEDURE	INFORMATION
<p>Day and second time zone hands fitting</p>		<ol style="list-style-type: none"> 1) Set the day hand onto the small counter at 9h. 2) Set the second time zone hand onto the small counter at 6h. Index this hand on the position 6h. 3) Check flatness and height of all hands. 	
<p>Hand-setting stem</p>		<ol style="list-style-type: none"> 1) Remove the hand-setting stem using the holder annexed. 2) Cut it at the length wanted and stick the crown. <p>Comment: Always remove the hand-setting stem on position 1.</p> <p>The movement is ready to be cased.</p>	<p>Use the movement holder TRT02-10</p> <p>TRT02-10</p> 
<p>Casing</p>			
<p>Movement casing</p>		<p>Insert the movement in the case avoiding shocks in the middle.</p>	<p>Warning of the positions of hands to not touch the indexes of the dial.</p>
<p>Hand-setting stem</p>		<p>Insert the hand-setting stem after possible greasing of the axis.</p>	
<p>Casing ring</p>		<p>Insert the casing ring.</p>	
<p>Hand-setting stem checking</p>		<p>Check the straight rotation of the crown and the different positions of the hand-setting stem.</p>	
<p>Case back</p>		<p>Put the case back to close the watch-case.</p>	

In conformity with RoHS standard

Doc. n° 0312204 - CG - A Up date: 18/10/2011 - Page 3

OBJECT	ILLUSTRATION	PROCEDURE	INFORMATION
Check and settings			
Cleanliness		Check the cleanliness of the watch (internal and external).	
Water-resistance		Check the water-resistance of the case if necessary.	
Hands synchronization and push-buttons checking		<ol style="list-style-type: none"> 1) Check the great working of push-button A. The hand has to do « jumps » of 1 day per pression. 2) Check the great working of push-button B when setting a second time zone on the counter (6h). The hand has to do « jumps » of 1 hour involving also the disc night/day. 	
Date setting		<ol style="list-style-type: none"> 1) Pull the stem on position 2. 2) Turn the crown clockwise to adjust the date. 	Warning: The quick correction of the date is not available between « 21h00 » and « 00h30 ».

In conformity with RoHS standard

Doc. n° 0312204 - CG - A Up date : 18/10/2011 - Page 4